

# THE EIGHTIES

## 1981

The **Lodi Memorial Hospital Foundation** is formed as a separate organization to raise funds for the hospital.

## 1982

LMH's **third and largest expansion**, as completed in February. 47,000 square feet, were added to the existing 97,000 for \$8.5 million.

Plans begin to expand the hospital's emergency room and ambulatory-care services.



## 1986

**Pharmacy computerizes** its patient-medication records and introduces an automated control system.

Charity collections reach 100 percent.

## 1987

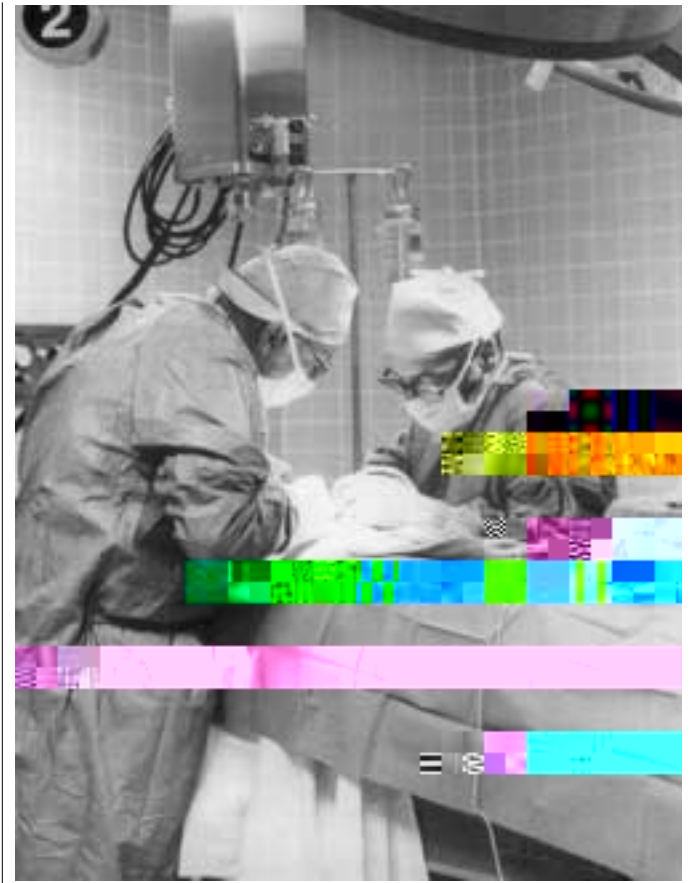
LMH provided about 4,800 days of patient care in its New Beginnings **chemical-dependency treatment program** at its West campus.

The state did not negotiate increased Medicare rates. Contractual allowances, with commercial insurance carriers, professional provider organizations and third-party contracting agencies contributed to **LMH writing off more than \$5 million in charges** from gross revenue.

## 1988

A new 2,500-square-foot, Physical-Therapy Department makes its home on the hospital's lower level.

LMH **develops joint venture with local physicians** to enhance cardiac services and provide additional diagnostic equipment for nuclear-medicine procedures.



## 1983

LMH's new **short-stay surgery** is completed.

## 1984

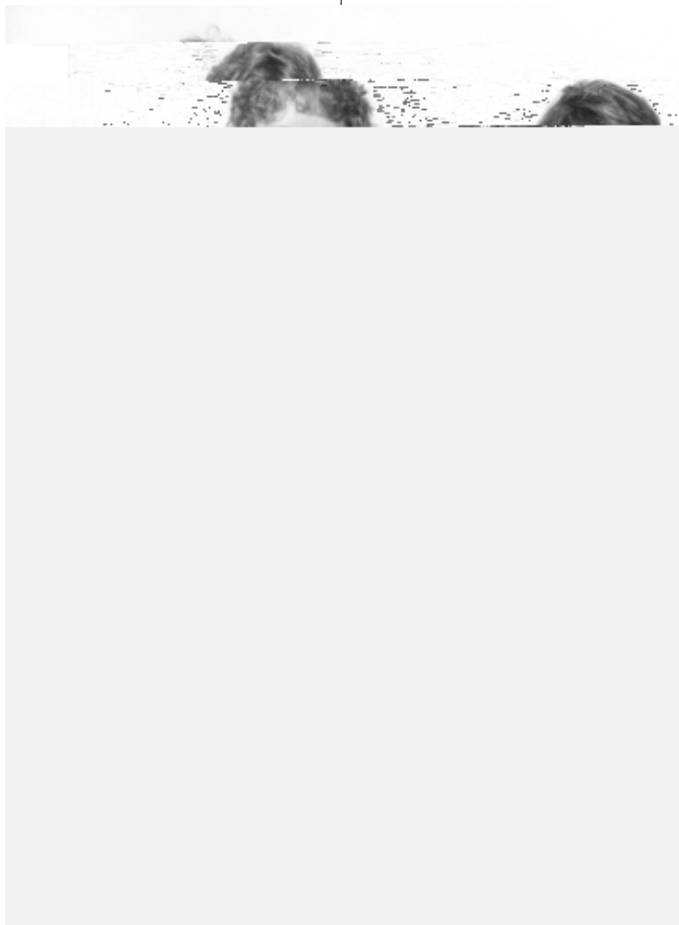
LMH moves into patients' homes, with the advent of its **Home-Health Agency** and **Memorial Home Care**.

The first full year of **Diagnostic Related Groups (DRGs)** and the new **Medicare** program.

## 1985

Outpatient **drawing lab opens in Galt**.

LMH boasts **27 agreements** with HMOs, PPOs, IPAs and insurance companies.



## 1989

Throughout the nation competition among hospitals and the underfunding of Medicare Welfare Reform.

